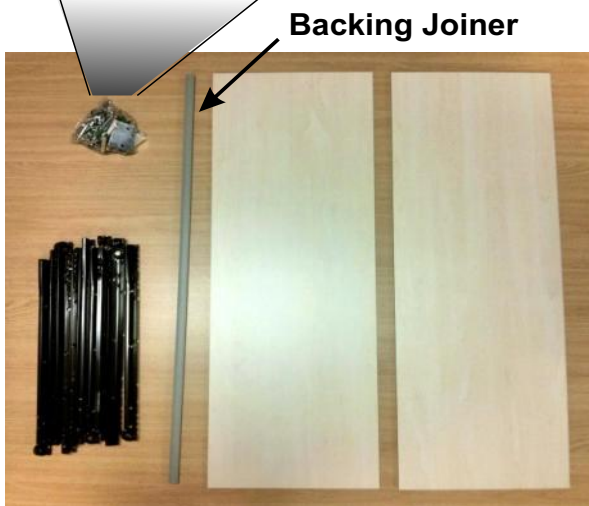
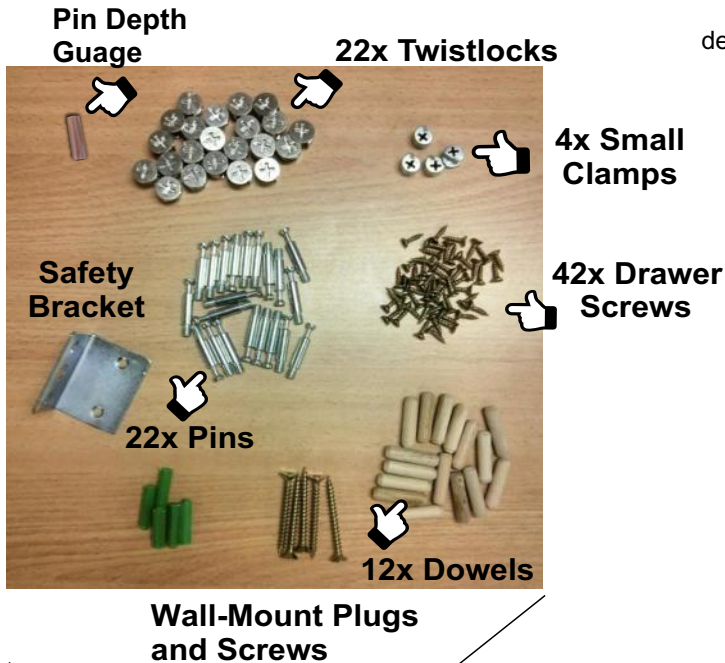


Hemingworth Thread Cabinet Assembly Instructions

Identifying the Parts



14x Drawer Runners

2x Backing Boards

You'll Also Need:

- Phillips head screwdriver
- Large flat-head screwdriver
- Drill with No. 2 Phillips bit (optional, recommended)

The thread cabinet is packaged in two separate cartons. Depending on how the cabinet is delivered, both cartons may not necessarily arrive together.



Drawers

Cabinet Frame



Front Panel (F)

Wall Mount (W)

Back Support - Top (BT)

Back Support - Bottom (BB)



1. Attach Hardware to Panels

- Place Left (L) and Right (R) Panels on a flat surface as shown
- Place seven of "Left" drawer runners on the Left Panel (L). Repeat for Right Panel (R)

Left Drawer Runner

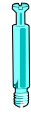
Right Drawer Runner



Using drawer screws, attach the drawer runners as shown. Repeat until there are 7 runners on each Left (L) and Right (R) panel.



Insert 4 wooden dowels in each Panel as shown.



Insert 9 Pins in each Left (L) and Right (R) Panel as shown

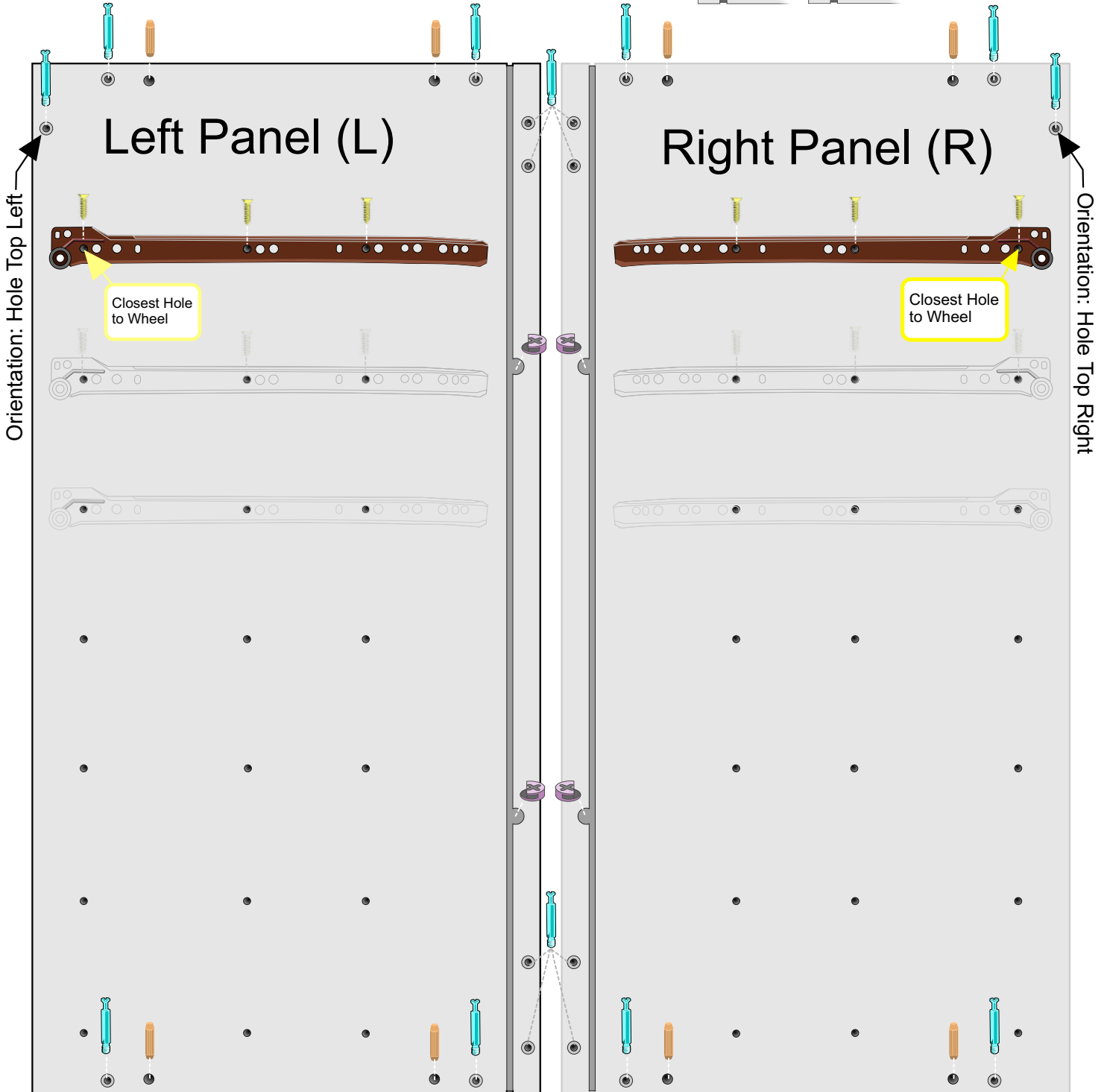
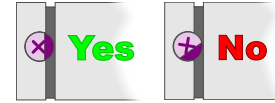
Tip: Use the Pin Depth Gauge to make sure pin is screwed to correct depth.



Head of Pin flush with top of Gauge
26 mm



Place 2 Small Clamps along the groove for each Left (L) and Right (R) Panel as shown. Be sure it is positioned so the groove remains open.

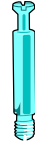


1. Attach Hardware (continued)

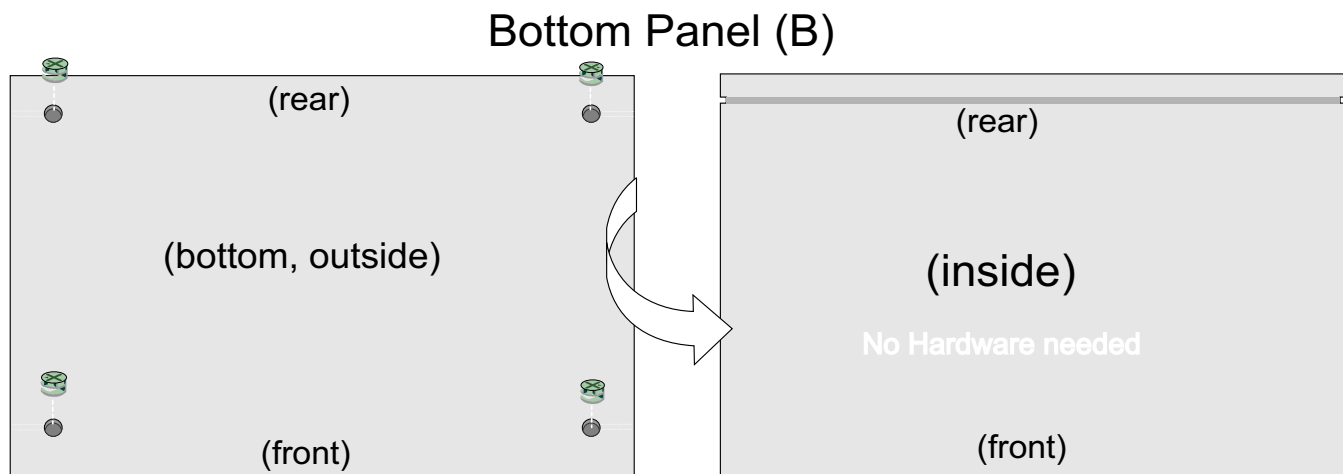
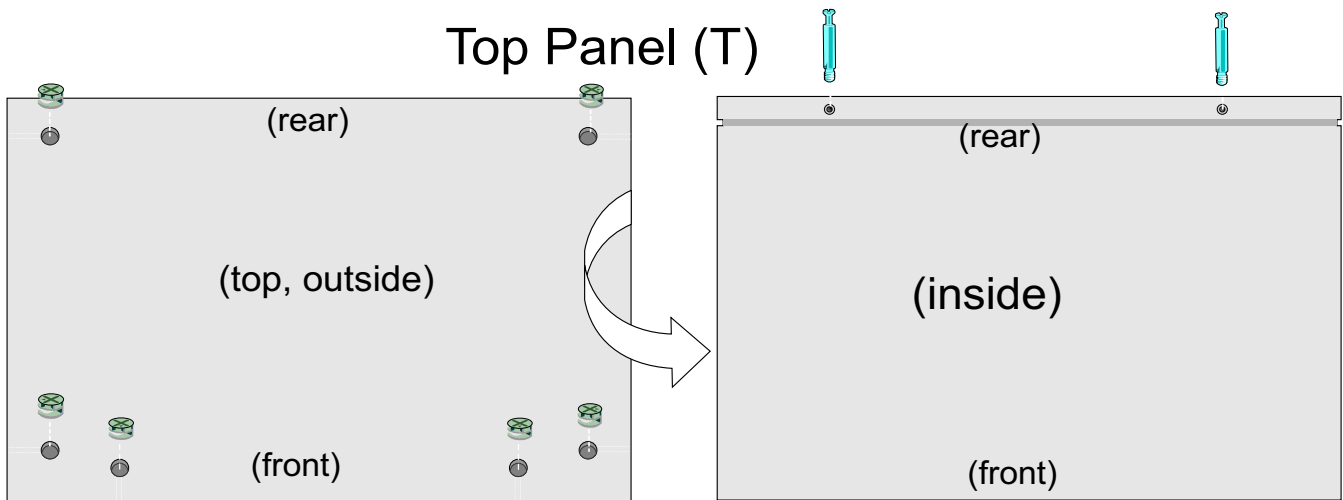
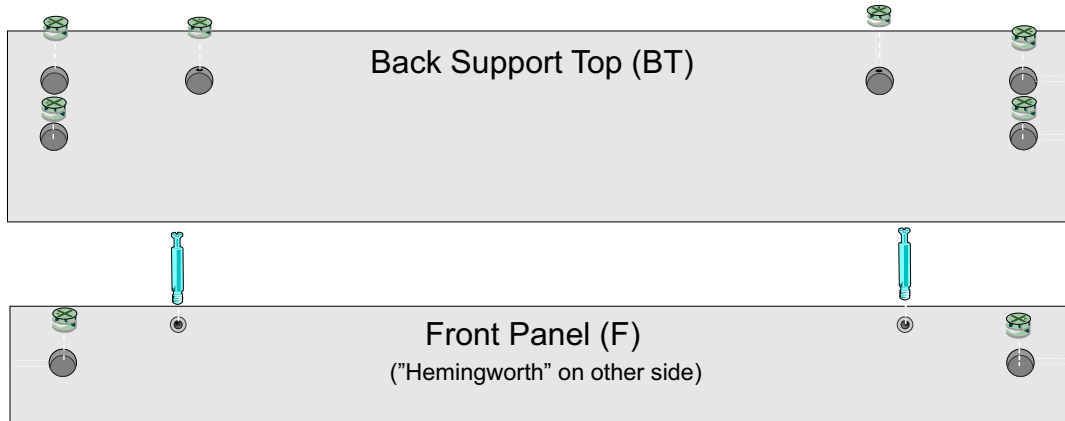
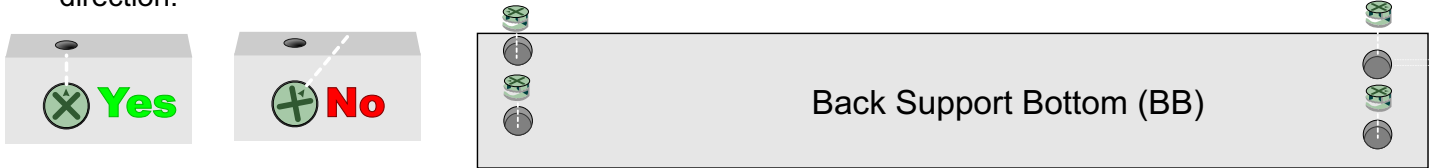


Insert 6 Twistlocks in Back Support Top (BT), 2 in Front Panel (F), 6 in Top Panel (T), 4 in Bottom Panel (B), 4 in Bottom Back Support (BB)

Important: Orient the Twistlock so that the arrow points toward the hole in the side. Pieces will not fit together unless Twistlocks are pointing in the right direction.

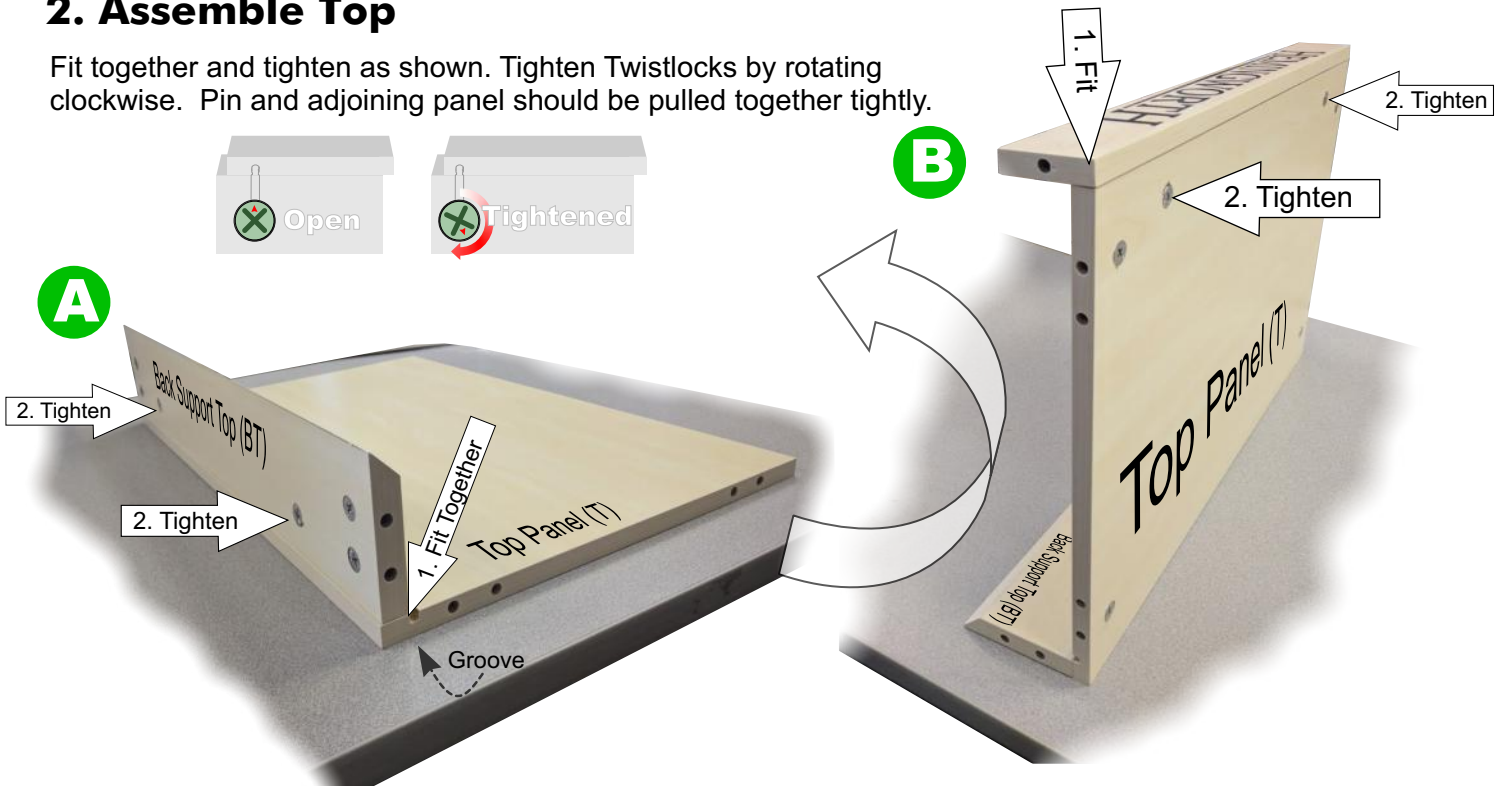


Once twist-locks are inserted, flip Top Panel (T) over and insert 2 pins. Insert 2 pins in Front Panel (F)

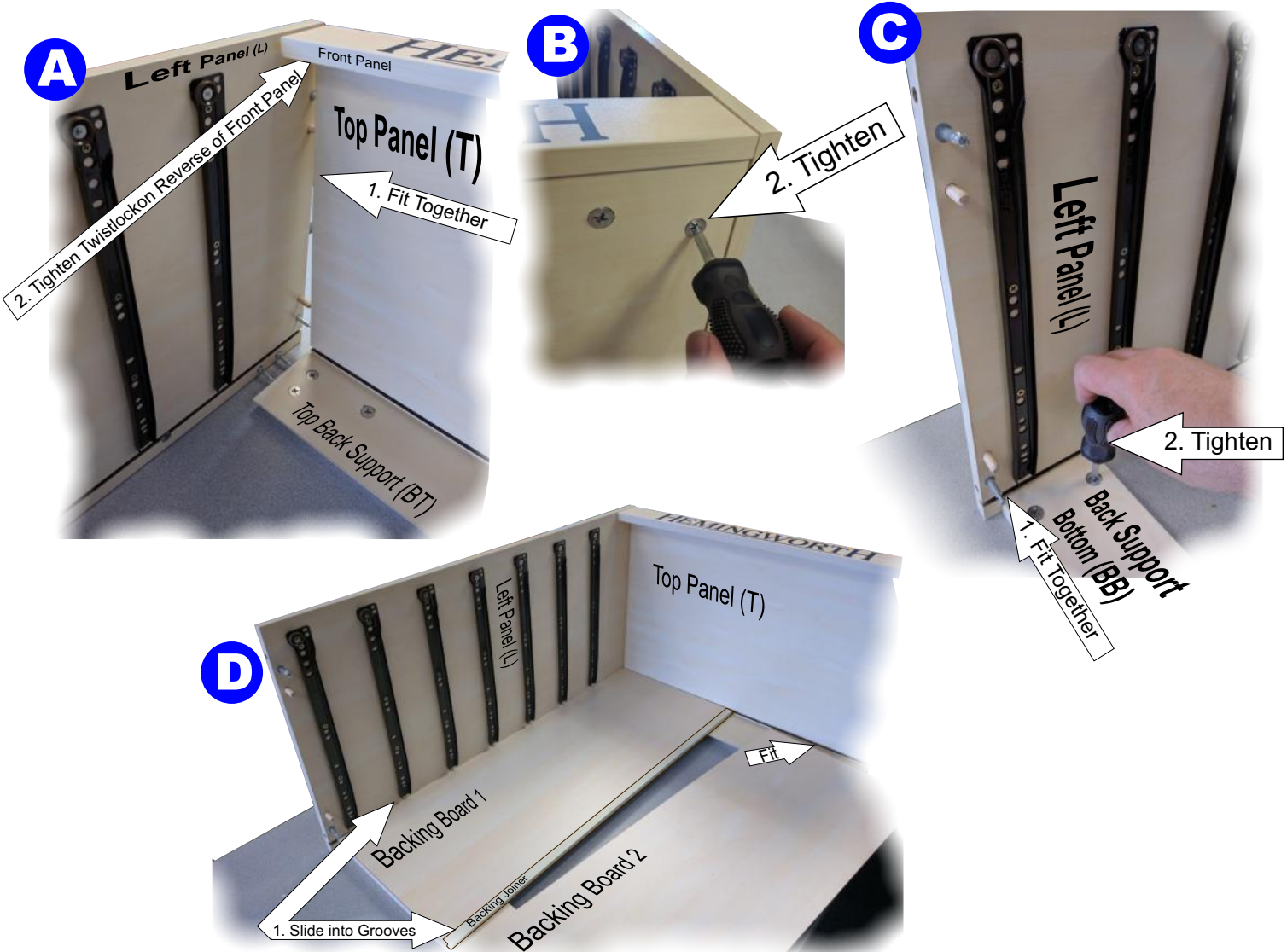


2. Assemble Top

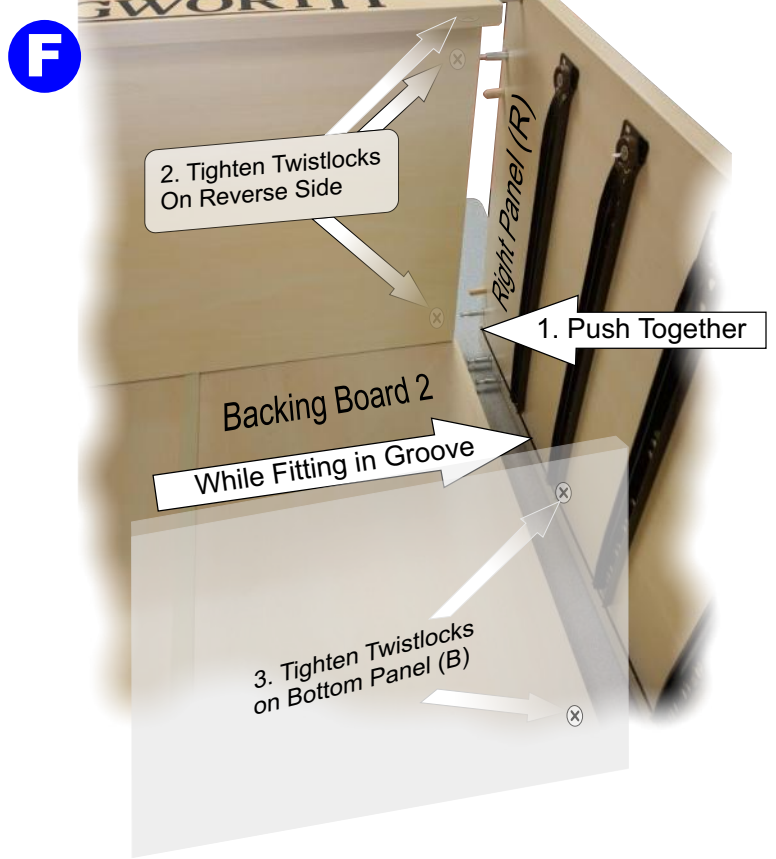
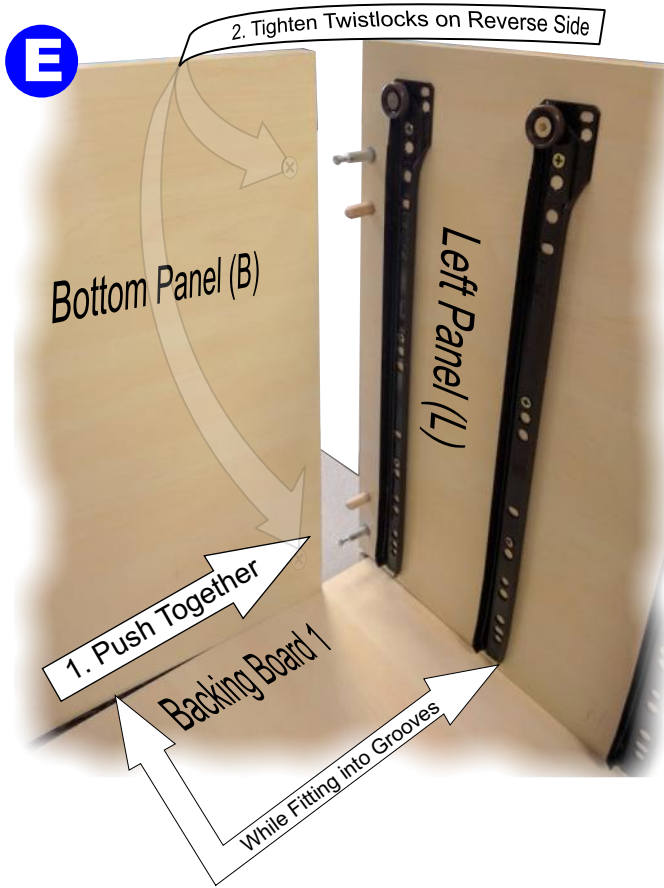
Fit together and tighten as shown. Tighten Twistlocks by rotating clockwise. Pin and adjoining panel should be pulled together tightly.



3. Fit Together

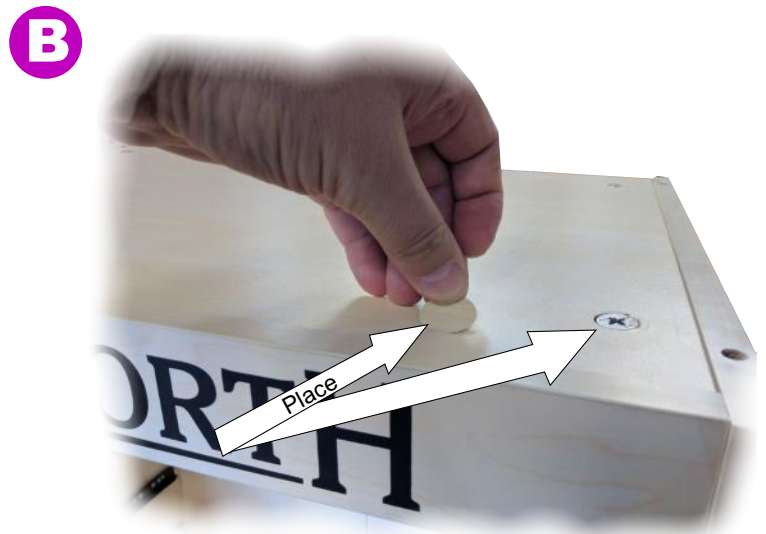


3. Fit Together (continued)



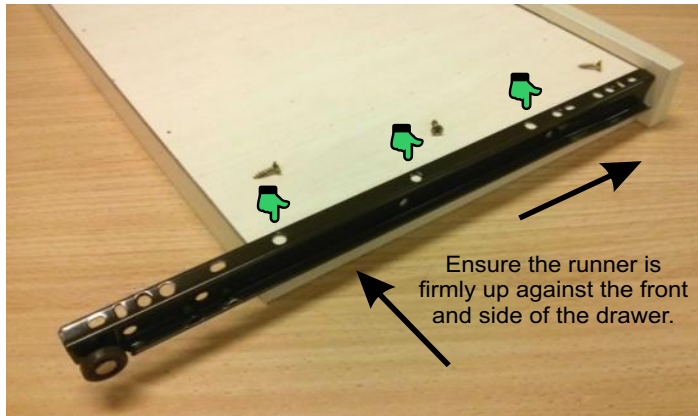
4. Turn Cabinet Upright

Tighten Remaining Twistlocks
Apply Wood Stickers over Twistlocks on Top



5. Assemble the Drawers

Affix two runners to each of the top 7 drawers as shown. Any three screw holes can be used to attach each runner, but avoid placing screws near the nails already in the panel. As the holes are not pre-drilled, using a drill or electric screwdriver is recommended. Ensure the runners are positioned firmly against the front and side of the drawer.



Insert all 7 finished drawers into the cabinet. If desired, apply the included stickers to the front face of each drawer to organise your Hemingworth threads. The stickers may need to be trimmed to size. Note that it is normal to have spare parts left over (dowels, screws, etc).

Your cabinet is now complete!

Safety Information

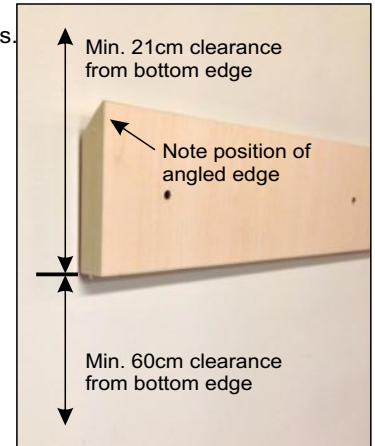
WARNING: If the thread cabinet is not mounted or anchored securely, it could topple forward and cause serious injury. Ensure it is fastened before use.

For your safety, it is essential that the finished cabinet is securely anchored to a wall or sturdy desk before being filled with thread. Follow the appropriate mounting instructions below for your situation, or consult your local hardware store for alternatives.

Wall Mounting

When full with thread the cabinet can weigh up to 100 lbs. It can be hung on a wall using the included wall mount panel. It is strongly recommended that wall mounting should only be attempted by an experienced tradesperson.

The Wall Mount (W) panel should be secured horizontally in the desired location, ensuring it is level and facing the wall as shown. It is essential that the panel is screwed firmly into the wall frame or an otherwise solid wall - plasterboard alone will not support the weight of the cabinet. *Note: the supplied wall plugs are for solid walls only and must not be used on plasterboard*



The cabinet can now be hung from the Wall Mount panel. For extra stability, the included safety bracket can be used to anchor the base of the stand to the wall.

Desk Mounting

If the cabinet is placed on a desk, the included safety bracket should be used to attach it securely to either the desk surface or a wall behind the cabinet as shown.



Stacking

Multiple thread cabinets are designed to be stacked together to create a larger storage unit. To stack two units, insert 4x dowels in the top of one cabinet and then carefully position the base of another cabinet over the top. Ensure both cabinets are independently affixed to a wall or desk - the stacking dowels are designed only to provide alignment, they will not prevent the cabinets from toppling.

Made in China

Distributed by:
Embroidery Central
1638 North 200 West
Logan, UT 84341
www.embroidery.com

*Embroidery
Central*

Need assistance? Call us at (800) 428-7606